

Dickinson Ranch

Simmental, Angus and Red Angus

Bull and Heifer Sale

Low Maintenance Cattle with Longevity



Saturday, March 27, 2010

1:00pm

At the Ranch North of Gorham, Kansas

-Selling-

77 Bulls - 54 Simmental & 22 Black Angus

25 Open Heifers

Dickinson Ranch
38th Consecutive Production Sale
March 27, 2010
1:00 P.M.
At the Ranch North of Gorham, KS

Directions to Sale:

From I-70 and Victoria Interchange: 8 miles North to (T) in road, 1 mile East to (T) in road, 1 mile North, road turns East, 2 miles East to Bluehill School, 1/4 mile North, Drive is on the East side of road.

From Natoma on Hwy 18: South of town 9 miles, road turns West, 3 miles West to (T) in road, 1 3/4 miles South.

Sale Day Phone No.'s

1-888-603-BULL

785-998-4401

785-998-4357

785-735-4347 Kirk's Cell

785-623-3044 Second Cell

785-735-4856 Casey's Cell

Auctioneer

J.C. Barr
Ph. 405-433-5636

Consulting Herd Veterinarian

G. John Thouvenelle, DVM, Russell, KS
Ph. 785-483-5822

Livestock Press Representatives & Ringman

Kansas Stockman

Andrew Sylvester
Ph. 785-273-5115
Mobile 785-456-4352

High Plains Journal

Guy Peverley
Ph. 785-456-9911

Stock Exchange

Justin Stout
Ph. 913-645-5136

Ultrasound Data will be available March 23th

Trucking

Quality truckers will be
available.

Lunch:

Complimentary

2010 Sire Summary+

Simmental Breed	CE	BW	WW	YW	MCE	MM	MWW	Stay	CW	YG	Marb.	REA	API	TI
<i>Breed Adverage</i>	7	1.1	31.2	55.9	2.7	4.4	20		-2.6	-.01	.13	.11	102	61
CNS DREAM ON L186	15.0	-1.0	32.6	51.9	12.9	-2.6	13.7	19.0	-8.5	-0.04	.45	.22	135.9	73.2
DS FORCE I 63S	13.7	0.5	36.5	71.0	3.9	4.2	22.5	16.2	5.7	0.01	.28	.41	120.5	70.7
DS KDZ 255M 241R	17.6	-2.1	-1.3	7.1	-0.9	-1.5	-2.1	19.2	-35.6	-0.08	.39	.24	126.3	53.5
DS LEGACY 128P	14.7	-3.4	34.7	48.3	-1.0	-1.4	16.0	16.9	-14.6	-0.07	0.48	.23	137.0	77.9
DS LORD OF THE RING 243S	7.8	1.6	29.2	55.6	3.3	2.8	17.4	18.6	-1.9	-0.11	0.18	.24	107.1	61.6
DS Z FORCE 179S	13.9	-2.5	37.6	55.1	2.9	-4.5	14.3		-9.2	-0.08	0.87	0.62	156.4	92.1
KD RED FORTUNE 170S		-1.5	24.4	52.7		3.8	16.0		-7.9	0.11	0.48	-.02	113.9	66.4
TRIPLE C INVASION R47K	9.4	0.5	21.9	40.1	-2.2	10.1	21.1	19.1	-12.8	-0.07	0.21	.34	109.7	59.8

Black Angus	CE	BW	WW	YW	Milk	CEM	Marb.	REA	\$W	\$F	\$G	\$B	\$EN
<i>Breed Adverage</i>	5	2.1	43	79	21	6	.28	.13	24.07	21.75	20.12	38.13	3.75
BALDRIDGE NAVIGATOR N5	6	1.2	43	99	11	6	.35	.33	18.75	41.10	25.09	53.21	7.48
CONNELY DANNY 5398	7	0	54	90	11	3	.38	.43	29.40	27.62	32.68	51.61	9.20
DA 6807 208R	9	.3	45	80	17	6	.20	.06	27.50	21.29	20.43	32.75	6.68
DA REDIRECT 118T	5	1.5	28	64	27	8	.33	.22	20.83	12.47	26.93	35.43	2.36
GAR PREDESTINED	7	4.1	53	99	28	6	1.06	.58	37.39	37.08	38.13	68.66	5.24
N BAR PRIME TIME D806	12	-1.6	29	61	18	10	.74	-.06	40.57	9.39	19.73	26.63	28.51



General Sales Information

Terms and Conditions of Sale

INSURANCE OF PURCHASES AND RISK

Each animal becomes the property of and therefore is also the risk of the purchaser as soon as it is sold; except it shall be the obligation of the seller to see that animals are fed and cared for free of charge to purchaser, until loaded after the sale, whichever occurs sooner. Arrangements will be made to have insurance available when making settlement.

TERMS and BIDDING

Terms of sale are cash or check to the clerk at the conclusion of the auction. Each animal will be sold to the highest bidder. The Auctioneer in charge will settle any disputes as to bids, and his decision on such matters shall be final.

HEALTH

Each bull sold will be tested for brucellosis and TB no sooner than 24 days prior to sale date, and proper certificates will be furnished to purchaser guaranteeing the animals sold to be free from such diseases. All bulls are fertility examined and guaranteed breeders. Fertility guarantee and scrotal measurements will be furnished to buyer.

REGISTRATION AND TRANSFERS

All animals have record papers and these will be transferred. Record information not in this catalog at press time will be supplied from the auction stand.

ANNOUNCEMENTS & SALE DAY SUPPLEMENT

Printed Material On the Sale Day Supplement takes precedence over printed matter in this catalog. Announcements from the auction block will take precedence over printed matter on the sale day supplement or in this catalog. All animals will be sold by lot number as announced by the auctioneer. Every effort has been made to assure correctness of the catalog, and in most cases, information quoted concerning the animals is taken from the respective breed association's official records.

PERSONAL LIABILITY

All persons who attend the sale do so at their own risk and the owners assume no liability, legal or otherwise, for any accident which may occur.

IDENTIFICATION

Seller offers each animal with a readable tattoo corresponding to its catalog designation and registration when applicable.

BREEDING GUARANTEE AND DEFINITIONS

1. All bulls are guaranteed to be breeders with the exception of . A) Injury or disease occurring to the animal after time of sale; B) Gross negligence or willful misconduct on the part of the purchaser; C) Animals shown competitively after being purchased from the Dickinson Simmental and Angus Ranch.

2. Bulls are guaranteed breeders if not allowed to run with the herd until at least 14 months of age. Any bull which either A) settles 1/3 or more of the healthy cows he serves; B) is the sire of 20 or more animals; or C) settles cows by natural service and passes a fertility test made by Dickinson Ranch consulting veterinarian during any 6 months trial (provided for in Paragraph 2 of the section of these sale terms and conditions entitled "Options and Privileges of Return or Adjustment") shall be considered a breeder. Any guarantees with respect to the ability to freeze semen shall be made by separate agreement between the Purchaser and Seller.

3. Females are guaranteed to be breeders, with the exception of:

- a) Female calves sold at side of dam

b) Injury or disease occurring to the animal after time of sale.

c) Gross negligence or willful misconduct on the part of the purchaser.

d) Females used in ovum transplant after time of sale.

e) Females shown competitively after time of sale.

f) Cows sold with calf at side or a female that calves after sale to a breeding prior to the date of sale.

SELLER'S SEMEN RIGHT

1. Seller reserves the right to keep a breeding interest with/without possession, in any bull so designated in this catalog or during the auction. Future semen collections of the bull must be made known to all owners. These collections and costs will be divided according to each owner's interest, unless otherwise agreed upon mutually by all owners.

2. On any and all other bulls in the sale which are collected in the future, Seller reserves the right to 100 vials of semen with registration rights and will pay his portion of the collection costs.

OPTIONS AND PRIVILEGES OF RETURN OR ADJUSTMENT

1. The following adjustments do not preclude the right of the Purchaser and seller to mutually agree upon other terms and conditions for settlement of any dispute. All claims for adjustment or refund must be made in writing either within six months from the date of sale or no later than when the animal reaches 24 months of age, whichever occurs later, with the exception of claims involving parentage of defects.

2. All returns or refunds will be paid in the form of a credit.

a) This credit will be limited to the purchase price less the salvage value of the animal and usage fees.

1) Salvage value=Market price x greater of sale day weight as listed in this catalog or current weight.

2) Usage fee is set at 25% of purchase value of the animal for each season of use.

3. In the event an animal is claimed to be a non breeder, the animal may be returned to the ranch of the seller, at Purchaser's expense, if in good physical condition, and the return is in compliance with the health requirements of the seller's state. The seller shall be entitled to a six (6) month trial period following the return of the animal in which to prove that the animal is a breeder. If at the end of six (6) months the seller is unable to prove the animal is a breeder, the seller shall, at the option of the purchaser, replace the animal with another of equal value or grant the Purchaser a credit on any products marketed by Seller. Either of these options shall be deemed full satisfaction and settlement. IF the Seller proved the animal to be a breeder, it shall be the obligation of the Purchaser to take delivery of the animal and pay all expense incurred for transportation. The Dickinson Ranch consulting Veterinarian will make the determination of breeder or non breeder.

RIGHTS AND OBLIGATIONS

The above terms and conditions of sale shall constitute a contract between the buyer and seller of each animal and shall be equally binding on both. Animals resold following purchase in this sale shall constitute a separate transaction and the rights and obligations of the parties connect thereto are not covered by the above terms and conditions of this sale. Neither the owners, auctioneers, nor any other person connected with the management or conduct of this sale assumes any liability, legal or otherwise, except as set forth.

Dear Friends,

Welcome to our 38th Production sale. Thank you for your interest in our breeding program. The bulls and heifers were weaned the first week of November. With the cold and wet winter the cattle have continued to perform well and will be ready to go to work for you.

The registered heifers are straight off the top. They are big ribbed and very uniform. If you are looking for functional heifers take a look at these. The bulls are also bred to be functional. They have optimum growth numbers and carcass traits. We are not selecting for single traits, maximum growth, or milk, but offering cattle that will help you lower your costs and function on your resources.

The cost of doing business in the cattle industry keeps getting greater. Yet the price we receive for our product is not following that trend, and we have little control over that. Over the past several months the common statement made by cattle producers has been, "We need to run these cows cheaper. Our feed bill is just too high." Lowering your feed costs with genetics is the answer. Cattle with genetics that are raised in a low input environment and able to survive is the place to start. Many producers comment that their bulls last for only two or three seasons. Yet every year we hear our bull buyers tell us how they finally sold the bull they bought from us six or seven years ago. When you use bulls with longevity you will raise daughters that have longevity breed in. This is where the longevity in the cows can work for you. You will benefit by selling more heifers and keeping less replacement females.

We hope to see you on sale day! If you can't make it to the ranch on sale day we would be glad to help you bid on the phone or you can make arrangements with Kirk for someone to handle your bid.

*Sincerely,
The Dickinson Family*



Know the Complementary Effects Before Making Your Bull Selection 2+2=5 (Heterosis)

“A Simmental crossbred cowherd - with milk production bred in -
is essential for maximum returns.”

Before purchasing your next group of herd bulls, we recommend you study the complementary effects of the breeds at which you are looking. Here is a checklist to consider as you plan your crossbreeding program:

1. **Superior Breeding Stock** - You should first choose the breeds that will supply you with the genetics you require in your breeding program. The primary requirement for crossbred cattle is superior breeding stock - either purebred or crossbred from performance - proven lines. Find the best animals available, with the traits that you want to improve in your herd. The better the individuals, the better your crossbred will be.

Outstanding mothering ability, fast, efficient growth and desirable carcass yield make Simmental very effective as either maternal or terminal crosses. This capability of working both ways is an advantage of Simmental in a crossbreeding program.

2. **Growth in Calf** - High growth cattle are in demand today. Bigger, heavier calves at weaning are the major goal of most crossbreeding programs. When they weigh more, they pay more, even factoring in those so-called “premiums” for lighter weight cattle.

Hybrid vigor (the boost in productivity that results from crossing two unrelated breeds of cattle) alone will increase weaning weights. Crossbreeding with Simmental will result in maximum hybrid vigor combined with superior growth and carcass cut ability.

3. **Milk in the Cow** - Crossbred calves are unable to fulfill their greater growth potential unless your cows have milking ability. This is why a Simmental crossbred cowherd - with milk production bred in - is essential for maximum returns.

4. **Carcass Desirability** - Today's market demands lean, high yielding carcasses that grade High Select Choice. Crossbred Simmentals produce carcasses with outstanding Yield Grade - a high percentage of lean and minimum waste fat in addition to the desired Quality Grade. Simmental-cross cattle have been superior in steer carcass futurities nationwide and are gaining popularity in the feed lot and packing sectors every day.

5. **Complementary Breeding** - To be effective and profitable, the breeds selected for use in a crossbreeding program must “complement” each other. Simmental excel in their ability to cross with - complement - the American beef herd available today. Simmental not only add growth, feed efficiency and muscle to the mix but they also have the added features of sound udders, more abundant milk and improved efficiency.

To meet today's demand for efficient, fast-gaining, high yielding cattle that return maximum profits, you have to take a close look at SimGenetics.

6. We think the Simmental - Angus cross is almost ideal. Angus helps provide marbling and the Simmental adds growth and lean yield. A half Simmental half Angus commercial cow is hard to beat. (2+2=5)

Ultrasound

We continue to ultrasound our sale bulls for back fat and marbling. There are some real differences in marbling. If you are wanting to be in the fore front of the new age of cattle selection, where value added is the buzz word then you as cattlemen need to start looking at marbling. Just because they are black hided doesn't mean they will grade choice.

We feel we have the genetics to help you become successful in raising the type of cattle the Industry is looking for. Fast gaining cattle with minimal back fat and the ability to grade.

However, you have to be willing to retain ownership or partial ownership on your top quality cattle to benefit from your intelligent genetic selections from yesterday and today. Don't let someone else reap the profits from your genetically engineered program.

DS 241R 11W PB Polled

1 ASA: 2521208 Tattoo: 11W
 Birth Date: 3/5/09 Birth Weight: 68
 205 Adj. Weight: 620 365 Adj. Weight: 996
 Scrotal: 32 ADG:

E	Growth				Maternal			Carcas		
	CE	BW	WW	YW	CE	Milk	WW	CW	REA	Marb.
D	15.1	-4.4	5.6	14.9	1.7	0.8	3.6	-34.8	.22	.35

DS KDZINGER 221J 255M
 DS KDZ 255M 241R
 DS MS FULL FIGURES 103L
 HOOKS SHEAR FORCE 38K
 DS MS SHEAR FORCE 54T
 KD MS KD ZINGER 313F 47R

Solid black. A nice calving ease bull out of a first calf heifer. He will work on heifers.

DS DREAM ON 68W PB Polled

3 ASA: 2521298 Tattoo: 68W
 Birth Date: 3/20/09 Birth Weight: 72
 205 Adj. Weight: 596 365 Adj. Weight: 1064
 Scrotal: 39

E	Growth				Maternal			Carcas		
	CE	BW	WW	YW	CE	Milk	WW	CW	REA	Marb.
D	12.7	-2	21.2	41.7	7.7	4.2	14.8	-15.4	.05	.24

NICHOLS LEGACY G151
 CNS DREAM ON L186
 CNS SHEEZA DREAM K107W
 DS SIX SHOOTER 3H
 DS MS SIX SHOOTER 76L
 DS MS VANDERBILT 244J

A black blaze-face Dream On out of a good Six Shooter cow.



Lot 3 68W

DS LEGACY 128P 130W PB Polled

6 ASA: 2521215 Tattoo: 130W
 Birth Date: 3/30/09 Birth Weight: 90
 205 Adj. Weight: 709 365 Adj. Weight: 1188
 Scrotal: 36

E	Growth				Maternal			Carcas		
	CE	BW	WW	YW	CE	Milk	WW	CW	REA	Marb.
D	12.0	-1.1	33.9	57.4	1.7	.6	17.6	-5.2	.19	.31

NICHOLS LEGACY G151
 DS LEGACY 128P
 KD MS RED LIGHT 120H
 DS 6 SHOOTER 151M
 DS MS 6 SHOOTER 151M 226
 KD MS BLACK PENTIUM 222K

A solid red purebred out of two black parents. Check out his numbers.

DS 241R 52W PB Polled

2 ASA: 2521296 Tattoo: 52W
 Birth Date: 3/18/09 Birth Weight: 76
 205 Adj. Weight: 628 365 Adj. Weight: 1093
 Scrotal: 38 ADG:

E	Growth				Maternal			Carcas		
	CE	BW	WW	YW	CE	Milk	WW	CW	REA	Marb.
D	16.2	-3.1	10.6	24.4	1.1	1.6	6.9	-27.2	.31	.35

DS KDZINGER 221J 255M
 DS KDZ 255M 241R
 DS MS FULL FIGURES 103L
 HOOKS SHEAR FORCE 38K
 DS MS SHEAR FORCE 11T
 DS MS SIX SHOOTER 84M

Solid black out of a first calf heifer. He will work on heifers. Nice carcass numbers.

DS DREAM ON 71W PB Polled

4 ASA: 2521299 Tattoo: 71W
 Birth Date: 3/20/09 Birth Weight: 89
 205 Adj. Weight: 665 365 Adj. Weight: 1203
 Scrotal: 38

E	Growth				Maternal			Carcas		
	CE	BW	WW	YW	CE	Milk	WW	CW	REA	Marb.
D	11.7	1.1	39.4	70.2	5.5	-8.2	11.5	5.8	.37	.33

NICHOLS LEGACY G151
 CNS DREAM ON L186
 CNS SHEEZA DREAM K107W
 DS ZINGER 313F 221J
 DS MS KDZ 221J 401L
 DS MISS IRONMAN 128G

Solid black. Check out his numbers.

DS 241R 88W PB Polled

5 ASA: 2521305 Tattoo: 88W
 Birth Date: 3/24/09 Birth Weight: 69
 205 Adj. Weight: 635 365 Adj. Weight: 1037
 Scrotal: 41

E	Growth				Maternal			Carcas		
	CE	BW	WW	YW	CE	Milk	WW	CW	REA	Marb.
D	12.7	-1.8	18.5	38.5	1.2	0	9.3	-16.9	.12	.27

DS KDZINGER 221J 255M
 DS KDZ 255M 241R
 DS MS FULL FIGURES 103L
 NLC LICHMN FORTUNE 7347K
 DS MS RED FORTUNE 160T
 KD MS PF 283J 276L

Solid black out of a solid red first calf heifer.



Lot 6 130W

DS LORD OF RING 127W PB Polled

7

ASA: 2521213 Tatoo: 127W
 Birth Date: 3/25/09 Birth Weight: 94
 205 Adj. Weight: 670 365 Adj. Weight: 1154
 Scrotal: 33

E	Growth				Maternal			Carcas		
	CE	BW	WW	YW	CE	Milk	WW	CW	REA	Marb.
D	8.1	2	35	65.7	2.8	-4	13.5	4.7	.11	.23

LORD BYRON

DS LORD OF THE RING 243S
 DS 6 SHOOTER 284M
 DS 6 SHOOTER 151M
 DS 6 SHOOTER 151M 231P
 DS MS KD ZINGER 221J 112

A black blaze.



Lot 7 127W

DS LORD OF RING 306W PB Polled

8

ASA: 2521280 Tatoo: 306W
 Birth Date: 5/14/09 Birth Weight: 88
 205 Adj. Weight: 714 365 Adj. Weight: 1165
 Scrotal: 33

E	Growth				Maternal			Carcas		
	CE	BW	WW	YW	CE	Milk	WW	CW	REA	Marb.
D	8.9	.9	35.4	69.3	3.5	-5	12.7	5.3	.19	.19

LORD BYRON

DS LORD OF THE RING 243S
 DS 6 SHOOTER 284M
 DS 6 SHOOTER 151M
 DS MS SIX SHOOTER 151M 318R
 DS MS 6 SHOOTER 284N

Black white face. Nice numbers. Triple bred to Six Shooter.



Lot 8 306W

DS LEGACY 128P 308W PB Polled

9

ASA: 2521281 Tatoo: 308W
 Birth Date: 5/15/09 Birth Weight: 80
 205 Adj. Weight: 697 365 Adj. Weight: 1085
 Scrotal: 37

E	Growth				Maternal			Carcas		
	CE	BW	WW	YW	CE	Milk	WW	CW	REA	Marb.
D	10.5	-1.7	29.3	50.8	-1.4	5	19.6	-9.9	.06	.28

NICHOLS LEGACY G151

DS LEGACY 128P
 KD MS RED LIGHT 120H
 KD RED BROTHER 76G
 KD MS RED BRO 76G 205N
 KD MS IRONMAN 196F

Solid black out of a solid black cow.

DS 241R 327W PB Polled

10

ASA: 2521286 Tatoo: 327W
 Birth Date: 5/22/09 Birth Weight: 75
 205 Adj. Weight: 785 365 Adj. Weight: 1074
 Scrotal: 34

E	Growth				Maternal			Carcas		
	CE	BW	WW	YW	CE	Milk	WW	CW	REA	Marb.
D	13.3	-1.9	23.8	45.7	-2	-5.6	6.3	-13	.03	.38

DS KDZINGER 221J 255M

DS KDZ 255M 241R
 DS MS FULL FIGURES 103L
 SRS FORTUNE 500
 DS MS FORTUNE 500 64S
 DS MS KDZ 221J 354P

Solid black out of a second calf heifer. These younger cows are weaning more than 60% of their body wt.

DS DREAM ON 91W PB Polled

11

ASA: 2521307 Tatoo: 91W
 Birth Date: 3/24/09 Birth Weight: 90
 205 Adj. Weight: 633 365 Adj. Weight: 1050
 Scrotal: 33

E	Growth				Maternal			Carcas		
	CE	BW	WW	YW	CE	Milk	WW	CW	REA	Marb.
D	11.0	1.4	33.8	60.4	8.3	-5.6	11.3	.5	.19	.28

NICHOLS LEGACY G151

CNS DREAM ON L186
 CMS SHEEZA DREAM K107W
 DS BLACK ZINGER 141B
 DS MS ZINGER 325K
 DS MS IRISH BLACK KN 27B

Solid black.



Abigail and her steer at the National Western Livestock show in Denver January 2010.

DS LEGACY 128P 136W PB Polled

12 ASA: 2521218 Tattoo: 136W
 Birth Date: 3/31/09 Birth Weight: 91
 205 Adj. Weight: 655 365 Adj. Weight: 1151
 Scrotal: 36

E	Growth				Maternal			Carcas		
	CE	BW	WW	YW	CE	Milk	WW	CW	REA	Marb.
D	-7	31.5	50.3		6.8	22.5		-9	0	.13

NICHOLS LEGACY G151
 DS LEGACY 128P
 KD MS RED LIGHT 120h
 DS P. STOCK 14N
 DS MS PS 14N 115R
 DS MS POLLFLECK 41E

A red blaze-face out of black parents. You will want to look this bull up. We kept his maternal solid red brother last year for a Herd Bull. His Mother's first calf was a redblaze that was the high seller two years ago.

DS LEGACY 128P 144W PB Polled

14 ASA: 2521222 Tattoo: 144W
 Birth Date: 3/30/09 Birth Weight: 80
 205 Adj. Weight: 652 365 Adj. Weight: 1010
 Scrotal: 35

E	Growth				Maternal			Carcas		
	CE	BW	WW	YW	CE	Milk	WW	CW	REA	Marb.
D	12.4	-1.9	30.6	49.4	.5	1	16.3	-11.3	.09	.33

NICHOLS LEGACY G151
 DS LEGACY 128P
 KD MS RED LIGHT 120H
 DS SIX SHOOTER 3H
 DS MS 6 SHOOTER 157M
 DS MS MONTANA 118E

Solid black

DS LORD OF RING 183W PB Polled

16 ASA: 2521237 Tattoo: 183W
 Birth Date: 4/4/09 Birth Weight: 86
 205 Adj. Weight: 609 365 Adj. Weight: 1052
 Scrotal: 35

E	Growth				Maternal			Carcas		
	CE	BW	WW	YW	CE	Milk	WW	CW	REA	Marb.
D	9.1	.8	32.8	58.1	1.1	-3	13.4	-1.8	.13	.13

LORD BYRON
 DS LORD OF THE RING 243S
 DS 6 SHOOTER 284M
 DS KDZINGER 221J 255M
 KD MS KDZINGER 255M 246R
 KD LORD BYRON 187H

Black white face. Double bred to Lord Byron.

DS LORD OF RING 224W PB Polled

18 ASA: 2521251 Tattoo: 224W
 Birth Date: 4/15/04 Birth Weight: 91
 205 Adj. Weight: 669 365 Adj. Weight: 1031
 Scrotal: 34

E	Growth				Maternal			Carcas		
	CE	BW	WW	YW	CE	Milk	WW	CW	REA	Marb.
D	9.3	2.8	28.9	54.1	2.4	1.5	15.9	-1	.15	.17

LORD BYRON
 DS LORD OF THE RING 243S
 DS 6 SHOOTER 284M
 DS 6 SHOOTER 84M
 DS 6 SHOOTER 84M 295P
 DS MS LCH 600U 407C

DS LORD OF RING 137W PB Polled

13 ASA: 2521219 Tattoo: 137W
 Birth Date: 3/30/09 Birth Weight: 88
 205 Adj. Weight: 592 365 Adj. Weight: 1095
 Scrotal: 37

E	Growth				Maternal			Carcas		
	CE	BW	WW	YW	CE	Milk	WW	CW	REA	Marb.
D	8.2	1	29.2	55.9	4.1	.9	15.5	-2.6	.09	.13

LORD BYRON
 DS LORD OF THE RING 243S
 DS 6 SHOOTER 284M
 KD REDCOAT 100M
 DS MS RC 100M 368R
 DS MS SIX SHOOTER 76L

Solid black.

DS LORD OF RING 172W PB Polled

15 ASA: 2521231 Tattoo: 172W
 Birth Date: 4/7/09 Birth Weight: 92
 205 Adj. Weight: 714 365 Adj. Weight: 1280
 Scrotal: 39

E	Growth				Maternal			Carcas		
	CE	BW	WW	YW	CE	Milk	WW	CW	REA	Marb.
D	7.9	3.1	36	58	4.4	1.6	19.6	1.3	.03	.09

LORD BYRON
 DS LORD OF THE RING 243S
 DS 6 SHOOTER 284M
 SSS CRAFTSMAN 004F
 KD MS CRAFTSMAN 128L
 KD MS POLLFLECK 246Y

Black white face with white on right front leg. Look at his numbers.

DS SF 179S 209W PB Polled

17 ASA: 2521246 Tattoo: 209W
 Birth Date: 4/11/09 Birth Weight: 84
 205 Adj. Weight: 669 365 Adj. Weight: 1044
 Scrotal: 37

E	Growth				Maternal			Carcas		
	CE	BW	WW	YW	CE	Milk	WW	CW	REA	Marb.
D	8.7	.5	29.2	38.8	-1.5	2	16.6	-14.4	.29	.57

HOOKS SHEAR FORCE 38K
 DS Z FORCE 179S
 473L
 ML BLACK IRON MAN 390C
 DS MS IRON MAN 194H
 DS MS CACTUS RED 97C

Solid black. Check out his carcass numbers. Out of a good 11 yr old cow.

DS SF 179S 289W PB Polled

19 ASA: 2521275 Tattoo: 289W
 Birth Date: 5/2/09 Birth Weight: 82
 205 Adj. Weight: 669 365 Adj. Weight: 969
 Scrotal: 34

E	Growth				Maternal			Carcas		
	CE	BW	WW	YW	CE	Milk	WW	CW	REA	Marb.
D	12.0	-2.3	26.1	35.4	1.5	-1	12.1	-20.5	.31	.34

HOOKS SHEAR FORCE 38K
 DS Z FORCE 179S
 473L
 RAINS LIMIT UP
 KD MS LIMITUP 208K
 KD MS BUCK 89A

A soled red out of two black parents.

DS LEG. 128P 287W **3/4 SM Polled**

20 ASA: 2521274 Tattoo: 287W
 Birth Date: 5/1/09 Birth Weight: 88
 205 Adj. Weight: 673 365 Adj. Weight: 1219
 Scrotal: 35

E	Growth				Maternal			Carcas		
	CE	BW	WW	YW	CE	Milk	WW	CW	REA	Marb.
D	11.5	-1.6	35.1	61.1	1.1	.3	17.8	-3.7	.11	.31

NICHOLS LEGACY G151
 DS LEGACY 128P
 KD MS RED LIGHT 120H
 DS SIX SHOOTER 3H
 DS MS SIX SHOOTER 415L
 197G
 Solid black.

DS 241R 234W **3/4 SM Polled**

21 ASA: 2521256 Tattoo: 234W
 Birth Date: 4/15/09 Birth Weight: 85
 205 Adj. Weight: 803 365 Adj. Weight: 1205
 Scrotal: 34

E	Growth				Maternal			Carcas		
	CE	BW	WW	YW	CE	Milk	WW	CW	REA	Marb.
D	16.2	-1.8	23.7	41.2	.4	-5.9	6	-15.7	.25	.38

DS KDZINGER 221J 255M
 DS KDZ 255M 241R
 DS MS FULL FIGURES 103L
 HOOKS SHEAR FORCE 38K
 DS MS SHEAR FORCE 13S
 DS MS KDZ 255M 192P
 Solid black out of a second calf heifer. Check him out.

DS SF 179S 145W **3/4 SM Polled**

22 ASA: 2521223 Tattoo: 145W
 Birth Date: 3/30/09 Birth Weight: 86
 205 Adj. Weight: 650 365 Adj. Weight: 1115
 Scrotal: 38

E	Growth				Maternal			Carcas		
	CE	BW	WW	YW	CE	Milk	WW	CW	REA	Marb.
D	10.7	-.4	35	60.6	2.6	-.9	16.6	-2.2	.31	.5

HOOKS SHEAR FORCE 38K
 DS Z FORCE 179S
 473L
 BLACK IRISH KANSAS
 DS MS BLACK IRISH 79J
 DS MISS IRONMAN 128G
 Solid black. Check out the carcass numbers.

DS 241R 3W **3/4 SM Polled**

23 ASA: 2521291 Tattoo: 3W
 Birth Date: 3/4/09 Birth Weight: 66
 205 Adj. Weight: 721 365 Adj. Weight: 847
 Scrotal: 36

E	Growth				Maternal			Carcas		
	CE	BW	WW	YW	CE	Milk	WW	CW	REA	Marb.
D	15.1	-3.3	17.5	34.2	1.1	-2.8	5.9	-21.9	.28	.37

DS KDZINGER 221J 255M
 DS KDZ 255M 241R
 DS MS FULL FIGURES 103L
 HOOKS SHEAR FORCE 38K
 DS SHEAR FORCE 77T
 KD MS SIX SHOOTER 151M 195R
 Solid black out of a first calf heifer.

DS 241R 13W **3/4 SM Polled**

24 ASA: 2521221 Tattoo: 13W
 Birth Date: 3/7/09 Birth Weight: 76
 205 Adj. Weight: 633 365 Adj. Weight: 1076
 Scrotal: 42

E	Growth				Maternal			Carcas		
	CE	BW	WW	YW	CE	Milk	WW	CW	REA	Marb.
D	11.8	-2.3	8.2	19.7	1.6	.7	4.8	-28.8	.14	.36

DS KDZINGER 221J 255M
 DS KDZ 255M 241R
 DS MS FULL FIGURES 103L
 GCF FIRST DREAM P13
 KD MS FIRST DREAM 146T
 20H
 Solid black out of first calf heifer.

DS R. FORT. 170S 76W **3/4 SM Polled**

25 ASA: 2521301 Tattoo: 76W
 Birth Date: 3/23/09 Birth Weight: 85
 205 Adj. Weight: 628 365 Adj. Weight: 1040
 Scrotal: 40

E	Growth				Maternal			Carcas		
	CE	BW	WW	YW	CE	Milk	WW	CW	REA	Marb.
D	.0	31.5	61		1.6	17.4		-1	-.02	.23

NLC LCHMN FORTUNE 7347K
 KD RED FORTUNE 170S
 6J
 BOZ REDCOAT
 DS MS RED COAT 217L
 DS MS LCHMAN 200A 877F
 Solid red.

DS LORD OF RING 77W **3/4 SM Polled**

26 ASA: 2521302 Tattoo: 77W
 Birth Date: 3/22/09 Birth Weight: 88
 205 Adj. Weight: 647 365 Adj. Weight: 1013
 Scrotal: 40

E	Growth				Maternal			Carcas		
	CE	BW	WW	YW	CE	Milk	WW	CW	REA	Marb.
D	-.1	22.9	47		1.7	13.1		-9.3	-.05	.17

LORD BYRON
 DS LORD OF THE RING 243S
 DS 6 SHOOTER 284M
 DRRA BJR 1J
 DS MS 20A 1J 290R
 DS MS RED BROTHER 76G 37P
 Black blaze out of a solid red cow.

DS INVASION 126W **3/4 SM Polled**

27 ASA: 2521212 Tattoo: 126W
 Birth Date: 3/26/09 Birth Weight: 87
 205 Adj. Weight: 663 365 Adj. Weight: 1128
 Scrotal: 36

E	Growth				Maternal			Carcas		
	CE	BW	WW	YW	CE	Milk	WW	CW	REA	Marb.
D	8.1	.7	28.6	50.2	-.5	-1.8	12.5	-6.6	.14	.28

SRS J914 PREFERRED BEEF
 TRIPLE C INVASION R47K
 HOOKS KARRIE 47K
 DS ZINGER 313F 221J
 DS MS KDZINGER 221J 212N
 167K
 Solid black. This is the first set of Invasion calves.



Lot 28 206W

DS LORK OF RING 206W 3/4 SM Polled

28

ASA: 2521244
Birth Date: 4/10/09
205 Adj. Weight: 759
Scrotal: 36

Tattoo: 206W
Birth Weight: 100
365 Adj. Weight: 1139

E	Growth				Maternal			Carcas		
	CE	BW	WW	YW	CE	Milk	WW	CW	REA	Marb.
D	5	2.8	40.4	72.6	3.8	3.8	24	9.8	.05	.23

LORD BYRON
DS LORD OF THERING 243S
DS 6 SHOOTER 284M
DS POLLFLECK 809
DS MS ET POLLFLECK - 71B
DA MS BANDO 71B

A black blaze out of a good half blood Pollfleck cow.

DS LORD OF RING 208W 3/4 SM Polled

29

ASA: 2521245
Birth Date: 4/11/09
205 Adj. Weight: 625
Scrotal: 34

Tattoo: 208W
Birth Weight: 98
365 Adj. Weight: 1066

E	Growth				Maternal			Carcas		
	CE	BW	WW	YW	CE	Milk	WW	CW	REA	Marb.
D	5	2.6	28	53.9	3.8	3.6	17.6	-1.3	-.01	.23

LORD BYRON
DS LORD OF THE RING 243S
DS 6 SHOOTER 284M
DS POLLFLECK 809
DS MS ET POLLFLECK-71B
DA MS BANDO 71B

Black blaze out of a good cow line.

DS 241R 234W 3/4 SM Polled

30

ASA: 2521256
Birth Date: 4/15/09
205 Adj. Weight: 803
Scrotal: 34

Tattoo: 234W
Birth Weight: 85
365 Adj. Weight: 1205

E	Growth				Maternal			Carcas		
	CE	BW	WW	YW	CE	Milk	WW	CW	REA	Marb.
D	16.2	-1.8	23.7	41.2	.4	-5.9	6	-15.7	.25	.38

DS KDZINGER 221J 255M
DS KDZ 255M 241R
DS MS FULL FIGURES 103L
HOOKS SHEAR FORCE 38K
DS MS SHEAR FORCE 13S
DS MS KDZ 255M 192P

Solid black out of a good second calf cow. Check out his numbers. Can you see the progress we are making with low input females.

DS SF 63S 255W 3/4 SM Polled

31

ASA: 2521264
Birth Date: 4/19/09
205 Adj. Weight: 629
Scrotal: 32

Tattoo: 255W
Birth Weight: 85
365 Adj. Weight: 1092

E	Growth				Maternal			Carcas		
	CE	BW	WW	YW	CE	Milk	WW	CW	REA	Marb.
D	11.0	-1	30.8	62.3	3.5	.5	15.9	-1.6	.11	.3

HOOKS SHEAR FORCE 38K
DS FORCE 163S
DS MS ZINGER 138P
DS SIX SHOOTER 3H
DS 6 SHOOTER 338P
864

Solid black.

DS SF 179S 266W 3/4 SM Polled

32

ASA: 2521267
Birth Date: 4/25/09
205 Adj. Weight: 665
Scrotal: 35

Tattoo: 266W
Birth Weight: 83
365 Adj. Weight: 1116

E	Growth				Maternal			Carcas		
	CE	BW	WW	YW	CE	Milk	WW	CW	REA	Marb.
D	12.3	-0.4	46.9	74.5	1.4	-5.8	17.7	5.5	-.02	.44

HOOKS SHEAR FORCE 38K
DS Z FORCE 179S
473L
DS KDZINGER 221J 255M
DS KDZ 255M 349P
DS MS BOLD FUTURE 177J

Solid black with nice numbers.



Lot 33 296W

DS LEG 128P 296W 3/4 SM Polled

33

ASA: 2521276
Birth Date: 5/1/09
205 Adj. Weight: 705
Scrotal: 36

Tattoo: 296W
Birth Weight: 84
365 Adj. Weight: 1185

E	Growth				Maternal			Carcas		
	CE	BW	WW	YW	CE	Milk	WW	CW	REA	Marb.
D	-1.4	36.6	58.7		-9	9.3		-5.1	.08	.43

NICHOLS LEGACY G151
DS LEGACY 128P
KD MS RED LIGHT 120H
BECTION LANCER F442T
DS MS LANCER 37P
DS MS RED BROTHER 76G 28

Solid black out of a solid red cow. Nice numbers.

DS SF 179S 128W 5/8 SM Polled

34

ASA: 2521214 Tatoo: 128W
 Birth Date: 3/30/09 Birth Weight: 83
 205 Adj. Weight: 606 365 Adj. Weight: 946
 Scrotal: 35

E	Growth				Maternal			Carcas		
	CE	BW	WW	YW	CE	Milk	WW	CW	REA	Marb.
D	9.3	-1.7	19.7	29.7	2.1	3.4	13.3	-22.6	.19	.57

HOOKS SHEAR FORCE 38K
 DS Z FORCE 179S
 473L
 KD RED BROTHER 76G
 DS MS RED BROTHER 76G 27
 5G
 Solid black.

DS 241R 322W 5/8 SM Polled

36

ASA: 2521285 Tatoo: 322W
 Birth Date: 5/15/09 Birth Weight: 76
 205 Adj. Weight: 907 365 Adj. Weight: 1296
 Scrotal: 37

E	Growth				Maternal			Carcas		
	CE	BW	WW	YW	CE	Milk	WW	CW	REA	Marb.
D	11.3	-2.5	22.2	46	.1	-3.1	8	-13.5	.01	.40

DS KDZINGER 221J 255M
 DS KDZ 255M 241R
 DS MS FULL FIGURES 103L
 DS 6 SHOOTER 151M
 DS MS 6 SHOOTER 151M 285S
 DA MS PARAMOUNT AMBUSH
 Solid black out of a second calf heifer. Check out his numbers. He will work on heifers.

DS REDIRECT 19W 1/2 SM Polled

38

ASA: 2521241 Tatoo: 19W
 Birth Date: 3/9/09 Birth Weight: 78
 205 Adj. Weight: 753 365 Adj. Weight: 1316
 Scrotal: 39

E	Growth				Maternal			Carcas		
	CE	BW	WW	YW	CE	Milk	WW	CW	REA	Marb.
D	-2.5	41.6	81.4		9.1	29.9		7.4	.22	.53

CA FUTURE DIRECTION 5321
 LD REDIRECT 11
 L D 6148 PRIDE 9112
 DS LEGACY 128P
 DS MS LEGACY 128P 251T
 DS MS ARNIE 199L
 Solid black out of a first calf heifer. He came small and kept on growing. Super numbers.



Lot 38 19W

DS LORD OF RING 179W 5/8 SM Polled

35

ASA: 2521235 Tatoo: 179W
 Birth Date: 4/1/09 Birth Weight: 89
 205 Adj. Weight: 629 365 Adj. Weight: 1107
 Scrotal: 38

E	Growth				Maternal			Carcas		
	CE	BW	WW	YW	CE	Milk	WW	CW	REA	Marb.
D	5.4	1.2	27.1	51.4	2.2	-1.6	11.9	-5	.03	.26

LORD BYRON
 DS LORD OF THE RING 243S
 DS 6 SHOOTER 284M
 DS 6 SHOOTER 151M
 DS MS SIX SHOOTER 151M
 DA MS 616 52N
 Black blaze.

DS MIMI 14W 1/2 SM Polled

37

ASA: 2521225 Tatoo: 14W
 Birth Date: 3/7/09 Birth Weight: 78
 205 Adj. Weight: 606 365 Adj. Weight: 987
 Scrotal: 38

E	Growth				Maternal			Carcas		
	CE	BW	WW	YW	CE	Milk	WW	CW	REA	Marb.
D		-1.8	16.8	48.7		6.1	14.5		-10.2	.22 .43

BJR MAKE MY DAY 981
 BIEBER MAKE MIMI 7249
 BIEBER SIREKA 6708
 NLC LCHMN FORTUNE 7347K
 DS MS RED FORTUNE 163T
 KD MS AUTOBAUN 292L
 Solid red out of a good red first calf heifer.



Lot 37 14W

DS LORD OF RING 66W 1/2 SM Polled

39

ASA: 2521297 Tatoo: 66W
 Birth Date: 3/20/09 Birth Weight: 76
 205 Adj. Weight: 652 365 Adj. Weight: 807
 Scrotal: 34

E	Growth				Maternal			Carcas		
	CE	BW	WW	YW	CE	Milk	WW	CW	REA	Marb.
D		-1.3	22.9	42.9		0	11.4		-14.8	.12 .09

LORD BYRON
 DS LORD OF THE RING 243G
 DS 6 SHOOTER 284M
 FINKS 7178 OF 6148
 DA 7178 403R
 DA MS HEARTBEAT 150J
 Black blaze out of good Angus cow.

DS FORT. 500 97W Polled

40 ASA: 2521308 Tattoo: 97W
 Birth Date: 3/25/09 Birth Weight: 80
 205 Adj. Weight: 626 365 Adj. Weight: 1040
 Scrotal: 36

E	Growth				Maternal			Carcas		
	CE	BW	WW	YW	CE	Milk	WW	CW	REA	Marb.
D	-1.3	22.8	44.1		-3	11.1		-13	-.37	.34

LRS PREFERRED STOCK 370C
 SRS FORTUNE 500
 SRS DAWSON QUEEN D-27

KD MS 515N (Base Cow)

Solid black.

DS 20A SON 212W Polled

42 ASA: 9677714 Tattoo: 212W
 Birth Date: 4/12/09 Birth Weight: 76
 205 Adj. Weight: 631 365 Adj. Weight: 1010
 Scrotal: 35

E	Growth				Maternal			Carcas		
	CE	BW	WW	YW	CE	Milk	WW	CW	REA	Marb.
D										

DRRA BJR 20A 1J
 DRRA 20A 1J 378T
 DRRA MS 4X 152N
 DS LEGACY 128P
 DS MS LEGACY 128P
 DS MS SIX SHOOTER

Solid red.

DS LORD OF RING 279W Polled

44 ASA: 2521270 Tattoo: 279W
 Birth Date: 4/27/09 Birth Weight: 84
 205 Adj. Weight: 624 365 Adj. Weight: 1042
 Scrotal: 35

E	Growth				Maternal			Carcas		
	CE	BW	WW	YW	CE	Milk	WW	CW	REA	Marb.
D	.6	22.3	36.2		-4.9	6.2		-15.2	-.27	.04

LORD BYRON
 DS LORD OF THE RING 243S
 DS 6 SHOOTER 284M

KD MS 513N (Base Cow)

DS DANNY 20W 1/4 SM Polled

46 ASA: 9677477 Tattoo: 20W
 Birth Date: 3/9/09 Birth Weight: 77
 205 Adj. Weight: 629 365 Adj. Weight: 1055
 Scrotal: 39

E	Growth				Maternal			Carcas		
	CE	BW	WW	YW	CE	Milk	WW	CW	REA	Marb.
D	-4	6.3	16		1.1	4.3		-33.5	.07	.57

CONNELLY DANNY BOY
 CONNELLY DANNY 5398
 ENDOVA OF CONANGA 858
 HOOKS SHEAR FORCE 38K
 DS MS SHEAR FORCE 41T
 DS MS GAR CIMERON 1R

Solid black out of a Shear Force first calf heifer.

DS LEG 128P 202W Polled

41 ASA: 2521243 Tattoo: 202W
 Birth Date: 4/11/09 Birth Weight: 84
 205 Adj. Weight: 676 365 Adj. Weight: 1136
 Scrotal: 38

E	Growth				Maternal			Carcas		
	CE	BW	WW	YW	CE	Milk	WW	CW	REA	Marb.
D	-1.9	27.7	36.6		-5.3	8.6		-19.2	-.16	.33

NICHOLS LEGACY G151
 DS LEGACY 128P
 KD MS RED LIGHT 120H

KD MS 533N (Base Cow)

A solid red out of a good base cow.

DS 241R 231W Polled

43 ASA: 2521255 Tattoo: 231W
 Birth Date: 4/8/09 Birth Weight: 84
 205 Adj. Weight: 743 365 Adj. Weight: 1147
 Scrotal: 38

E	Growth				Maternal			Carcas		
	CE	BW	WW	YW	CE	Milk	WW	CW	REA	Marb.
D	-1.5	18.8	35		-4	5.4		-18.8	.12	.19

DS KDZINGER 221J 255M
 DS KDZ 255M 241R
 DS MS FULL FIGURES 103L
 DA 6807 69P
 DA MS 6807 SON 261S
 DA MS 616 40N

Solid black out of second calf Angus cow. Good numbers.S

DS REDIRECT 118T 193W Polled

45 ASA: 2521240 Tattoo: 193W
 Birth Date: 4/11/09 Birth Weight: 78
 205 Adj. Weight: 665 365 Adj. Weight: 1001
 Scrotal: 40

E	Growth				Maternal			Carcas		
	CE	BW	WW	YW	CE	Milk	WW	CW	REA	Marb.
D	-4.3	12.4	43.8		11.3	17.5		-16.6	-.08	.65

LD REDIRECT 11
 DA REDIRECT 118T
 DA MS NELSON TARGET 157P
 HTP SVF IN DEW TIME
 DS MS DEW TIME 191T
 DS MS KDZ 255M 316P

Solid black out of a first calf heifer.

DS DANNY 1W 1/4 SM Polled

47 ASA: 9677449 Tattoo: 1W
 Birth Date: 2/20/09 Birth Weight: 68
 205 Adj. Weight: 609 365 Adj. Weight: 1074
 Scrotal: 38

E	Growth				Maternal			Carcas		
	CE	BW	WW	YW	CE	Milk	WW	CW	REA	Marb.
D	-3.9	6.9	13.2		.9	4.3		-35.2	.07	.44

CONNELLY DANNY BOY
 CONNELLY DANNY 5398
 ENDOVA OF CONANGA 858
 NLC LCHMN FORTUNE 7347K
 DS MS RED FORTUNE 216T
 DS MS RED LIGHT

Solid black out of a solid red first calf heifer.



Lot 48 22W

DS MIMI 22W 1/4 SM Polled

48

ASA: 2521254
Birth Date: 3/9/09
205 Adj. Weight: 720
Scrotal: 41

Tattoo: 22W
Birth Weight: 84
365 Adj. Weight: 1212

E	Growth				Maternal			Carcas		
	CE	BW	WW	YW	CE	Milk	WW	CW	REA	Marb.
P										
D	-2.5	25.2	59.1		3.4	16		-5.3	-.1	.51

BJR MAKE MY DAY 981

BIEBER MAKE MIMI 7249

BIEBER SIREKA 6708

HOOKS SHEAR FORCE 38K

DS MS SHEAR FORCE 18T

DS MS 20A 1J 290R

Solid red out of a red first calf heifer. Nice numbers.

DS RF 170S 166W 1/4 SM Polled

49

ASA: 2521228
Birth Date: 4/6/09
205 Adj. Weight: 661
Scrotal: 35

Tattoo: 166W
Birth Weight: 83
365 Adj. Weight: 1111

E	Growth				Maternal			Carcas		
	CE	BW	WW	YW	CE	Milk	WW	CW	REA	Marb.
P										
D	-1.4	23.2	45.1		-1.8	9.8		-12.5	-.20	.43

NLC LCHMN FORTUNE 7347K

KD RED FORTUNE 170S

6J

BECKTON LANCER

DRRA MS BECTON LANCER 60N

DRRA MS CONYON 191K

Solid red out of a good Red Angus cow.

DS RF 170S 302W 1/4 SM Polled

50

ASA: 2521279
Birth Date: 5/12/09
205 Adj. Weight: 706
Scrotal: 33

Tattoo: 302W
Birth Weight: 73
365 Adj. Weight: 1076

E	Growth				Maternal			Carcas		
	CE	BW	WW	YW	CE	Milk	WW	CW	REA	Marb.
P										
D	-2.3	27	50		-8	12.7		-11.1	-.01	.24

NLC LCHMN FORTUNE 7347K

KD RED FORTUNE 170S

6J

LEACHMAN EBV 6703

DRRA MS ET EBV 75N

BJR TIDY BEE 968

Solid red out of a good Red Angus cow.

DS RF 170S 184W 1/4 SM Polled

51

ASA: 2521238
Birth Date: 4/7/09
205 Adj. Weight: 749
Scrotal: 37

Tattoo: 184W
Birth Weight: 72
365 Adj. Weight: 1188

E	Growth				Maternal			Carcas		
	CE	BW	WW	YW	CE	Milk	WW	CW	REA	Marb.
P										
D	-2.3	31.2	56.6		-1.7	13.9		-7.3	-.01	.24

NLC LCHMN FORTUNE 7347K

KD RED FORTUNE 170S

6J

NSF SPECIAL DELIVERY

DA MS S. DELIVERY 26R

DRRA EBV MS 72N

Solid red. Look at his numbers.

DS RF 170S 267W 1/4 SM Polled

52

ASA: 2521268
Birth Date: 4/25/09
205 Adj. Weight: 615
Scrotal: 34

Tattoo: 267W
Birth Weight: 83
365 Adj. Weight: 1023

E	Growth				Maternal			Carcas		
	CE	BW	WW	YW	CE	Milk	WW	CW	REA	Marb.
P										
D	-2.2	14.9	35.2		7.1	14.5		-19.3	-.16	.51

NLC LCHMN FORTUNE 7347K

KD RED FORTUNE 170S

6J

RD KEYSTONE OF 3R

DRRA BJR KEYSTONE 124J

BJR TIDY BEE 0903

Solid red.

DS RF 170S 284W 1/4 SM Polled

53

ASA: 2521272
Birth Date: 5/1/09
205 Adj. Weight: 681
Scrotal: 38

Tattoo: 284W
Birth Weight: 86
365 Adj. Weight: 989

E	Growth				Maternal			Carcas		
	CE	BW	WW	YW	CE	Milk	WW	CW	REA	Marb.
P										
D	-1.3	22.8	46.6		.1	11.5		-11.4	-.17	.39

NLC LCHMN FORTUNE 7347K

KD RED FORTUNE 170S

6J

DRRA BJR 20A 1J

DS MS 20A 1J 394R

KD RED BROTHER 76G 258M

Solid red.

DS RF 170S 300W 1/4 SM Polled

54

ASA: 2521278
Birth Date: 5/5/09
205 Adj. Weight: 687
Scrotal: 34

Tattoo: 300W
Birth Weight: 83
365 Adj. Weight: 1021

E	Growth				Maternal			Carcas		
	CE	BW	WW	YW	CE	Milk	WW	CW	REA	Marb.
P										
D	-2.8	17.2	32		-4.6	4		-22.5	-.01	.24

NLC LCHMN FORTUNE 7347K

KD RED FORTUNE 170S

6J

BJR MONU 4X

DRRA MS 4X 152N

BJR LAKINA 319-810

Solid red.



Lot 55 173W

DS RF 170S 173W 1/4 SM Polled

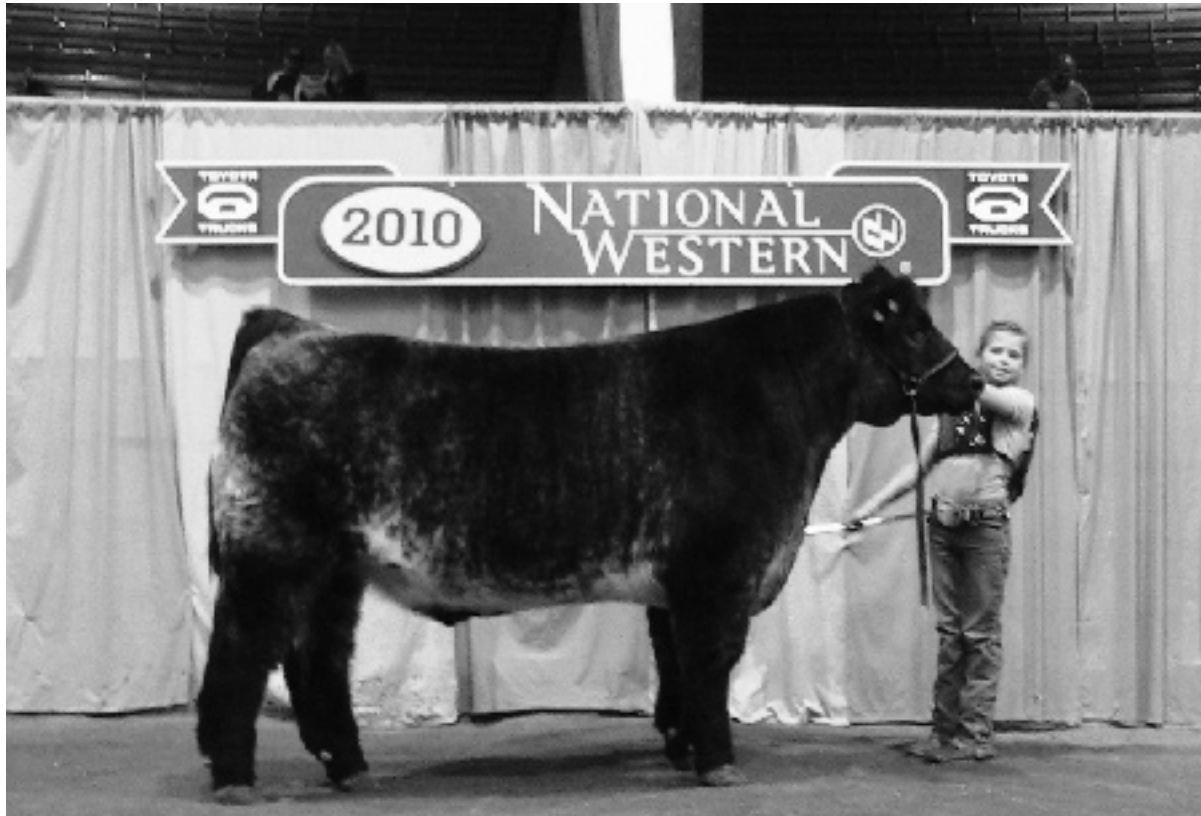
55

ASA: 2521232
 Birth Date: 4/6/09
 205 Adj. Weight: 677
 Scrotal: 37

Tattoo: 173W
 Birth Weight: 88
 365 Adj. Weight: 1098

E P D	Growth				Maternal			Carcas		
	CE	BW	WW	YW	CE	Milk	WW	CW	REA	Marb.
	-1.1	25.6	51.5					-8.2	-.18	.39

MLC LCHMN FORTUNE 7347K
 KD RED FORTUNE 170S
 6J
 DRRR BJR 20A 1J
 DS MS 20A 1J 382R
 DS MS RED BROTHER 76G 37
 Solid red.



Abigail with her Dickinson Ranch breed steer showing at the National Western Livestock Show in Denver, January 2010. Abigail was the Grand Champion Junior Beef Showman. Thanks Casey for all your help!!

ANGUS BULLS

DA DANNY 5398 10W

56	AAA:	Tatoo: 10W
	Birth Date: 3/5/09	Birth Weight: 91
	205 Adj. Weight: 731	365 Adj. Weight: 1013
	Scrotal: 35	

E	Production						Ultrasound				
	CED	BW	WW	YW	CEM	Milk	CW	%RP	REA	%IMF	Fat
D	8	-.1	48	87	5	13	9		.24	.34	-.019

CONNEALY DANNY BOY

DANNY 5398	\$Value
ENDOVA OF CONANGA 858	\$W 26.43
BASIN MAX 602C	\$F 26.65
DA MS 602C 174T	\$G 26.58
DA MS 616 66M	\$B 44.52

This is out first set of Danny 5398 calves. They are thick. He is out of a first calf heifer



Lot 59 48W

DA BALDRIDGE NAVIGATOR N5 48W

59	AAA:	Tatoo: 48W
	Birth Date: 3/16/09	Birth Weight: 76
	205 Adj. Weight: 718	365 Adj. Weight: 1070
	Scrotal: 39	ADG:

E	Production						Ultrasound				
	CED	BW	WW	YW	CEM	Milk	CW	%RP	REA	%IMF	Fat
D	7	1.1	40	84	6	13	10		.22	.30	.004

BALDRIDGE KABOOM K243 KCF

BALDRIDGE NAVIGATOR N5	\$Value
BALDRIDGE FOREVER LADY K856	\$W 21.02
RITO 616 OF 4B20 6807	\$F 27.66
DA MS 616 66M	\$G 23.96
DA MS AMB 303F OF 217K	\$B 42.45

We used Navigator for his growth, EN value, and moderate milk. A good bull here..

DA PRIME TIME D806 53W

61	AAA:	Tatoo: 53W
	Birth Date: 3/19/09	Birth Weight: 69
	205 Adj. Weight: 689	365 Adj. Weight: 1110
	Scrotal: 34	ADG:

E	Production						Ultrasound				
	CED	BW	WW	YW	CEM	Milk	CW	%RP	REA	%IMF	Fat
D	7	.9	28	55	8	18	-5		.02	.57	.078

GARDENS PRIME TIME

PRIME TIME D806	\$Value
N BAR MS EMULOUS A404	\$W 31.04
PARAMONT AMBUSH 2172	\$F 4.31
DA MS PARAMOUNT AMBUSH 326F	\$G 25.17
GAR 6807 TRAVELER 822	\$B 27.37

The D806 calves are moderate and easy to handle. Good numbers.

DA BALDRIDGE NAVIGATOR 30W

57	AAA:	Tatoo: 30W
	Birth Date: 3/13/09	Birth Weight: 73
	205 Adj. Weight: 535	365 Adj. Weight: 966
	Scrotal: 34	ADG:

E	Production						Ultrasound				
	CED	BW	WW	YW	CEM	Milk	CW	%RP	REA	%IMF	Fat
D	7	.9	33	72	6	15	4		.08	.32	.009

BALDRIDGE KABOOM

BALDRIDGE NAVIGATOR N5	\$Value
BALDRIDGE FOREVER LADY K856	\$W 21.05
GAR SLEEP EASY 1009	\$F 37.42
DA MS SLEEP EASY 88J	\$G 23.84
	\$B 32.06

DA BALDRIDGE NAVIGATOR N5 47W

58	AAA:	Tatoo: 47W
	Birth Date: 3/16/09	Birth Weight: 74
	205 Adj. Weight: 669	365 Adj. Weight: 920
	Scrotal: 38	ADG:

E	Production						Ultrasound				
	CED	BW	WW	YW	CEM	Milk	CW	%RP	REA	%IMF	Fat
D	6	.9	35	74	6	15	9		.16	.16	.001

BALDRIDGE KABOONA

BALDRIDGE NAVIGATOR N5	\$Value
BALDRIDGE FOREVER LADY K856	\$W 20.95
DA NELSON TARGET 42M	\$F 20.06
DA MS NELSON TARGET 157P	\$G 12.05
DA MS RAINMAKER 173B	\$B 27.11

A really low input cow line.

DA GAR PREDESTINED 51W

60	AAA:	Tatoo: 51W
	Birth Date: 3/17/09	Birth Weight: 73
	205 Adj. Weight: 619	365 Adj. Weight: 1002
	Scrotal: 34	ADG:

E	Production						Ultrasound				
	CED	BW	WW	YW	CEM	Milk	CW	%RP	REA	%IMF	Fat
D	4	3.3	42.5	76	7	25	22		.49	.63	.041

BR NEW DESIGN 036

GAR PREDESTINED	\$Value
GAR EXT 4206	\$W 30.77
PARAMONT AMBUSH 2172	\$F 18.77
DA MS PARAMOUNT AMBUSH 179F	\$G 28.85
DA MS NEW TREND 165C	\$B 45.23

A good Predestined out of a good Ambush 13 yr. old cow.

DA PRIMETIME D806 60W

62	AAA:	Tatoo: 60W
	Birth Date: 3/20/09	Birth Weight: 106
	205 Adj. Weight: 741	365 Adj. Weight: 1184
	Scrotal: 38	ADG:

E	Production						Ultrasound				
	CED	BW	WW	YW	CEM	Milk	CW	%RP	REA	%IMF	Fat
D	9	.3	32	65	8	21	0		-.03	.61	.12

GARDENS PRIMETIME

PRIMETIME D806	\$Value
N BAR MS EMULOUS A404	\$W 31.92
BON VIEW NEW DESIGN 1407	\$F 11.99
DA MS 1407 145P	\$G 23.58
DA MS TRAVELER 410H	\$B 29.90

For use on cows. He will work fine on mature cows. We didn't have any calving difficulty with D806.

DA 6807 208R 197W

70

AAA: Tatoo: 197W
 Birth Date: 4/6/09 Birth Weight: 80
 205 Adj. Weight: 781 365 Adj. Weight: 1092
 Scrotal: 36 ADG:

E	Production						Ultrasound				
	CED	BW	WW	YW	CEM	Milk	CW	%RP	REA	%IMF	Fat
D	11	-1.6	30	68	9	14	3		.04	.21	.006

E	Production						Ultrasound				
	CED	BW	WW	YW	CEM	Milk	CW	%RP	REA	%IMF	Fat
D	7	.7	40	70	4	19	7		-.04	.17	.03

The 208R bulls were the favorite sire group in 2009.

DA 6807 208R 214W

71

AAA: Tatoo: 214W
 Birth Date: 4/10/09 Birth Weight: 85
 205 Adj. Weight: 715 365 Adj. Weight: 1160
 Scrotal: 38 ADG:

E	Production						Ultrasound				
	CED	BW	WW	YW	CEM	Milk	CW	%RP	REA	%IMF	Fat
D	7	.7	40	70	4	19	7		-.04	.17	.03

E	Production						Ultrasound				
	CED	BW	WW	YW	CEM	Milk	CW	%RP	REA	%IMF	Fat
D	9	1.9	37.5	63.5	7	20	0		-.05	.21	.004

His dam is 13 years old. If you keep your own females back this bull can increase your cow longevity.

DA 6807 208R 235W

72

AAA: Tatoo: 235W
 Birth Date: 4/18/09 Birth Weight: 85
 205 Adj. Weight: 806 365 Adj. Weight: 1137
 Scrotal: 38 ADG:

E	Production						Ultrasound				
	CED	BW	WW	YW	CEM	Milk	CW	%RP	REA	%IMF	Fat
D	9	1.9	37.5	63.5	7	20	0		-.05	.21	.004

E	Production						Ultrasound				
	CED	BW	WW	YW	CEM	Milk	CW	%RP	REA	%IMF	Fat
D	7	.3	34	64	7	19	4		-.05	.20	.01

He weaned off at 806# on a 11yr old cow.

DA 6807 208R 270W

73

AAA: Tatoo: 270W
 Birth Date: 4/26/09 Birth Weight: 83
 205 Adj. Weight: 667 365 Adj. Weight: 1114
 Scrotal: 37 ADG:

E	Production						Ultrasound				
	CED	BW	WW	YW	CEM	Milk	CW	%RP	REA	%IMF	Fat
D	7	.3	34	64	7	19	4		-.05	.20	.01

E	Production						Ultrasound				
	CED	BW	WW	YW	CEM	Milk	CW	%RP	REA	%IMF	Fat
D	8	.2	39	75	6	18	3		.08	.37	.012

Double bred Bando 155 and Double bred Traveler

DA 6807 208R 293W

74

AAA: Tatoo: 293W
 Birth Date: 5/1/09 Birth Weight: 80
 205 Adj. Weight: 703 365 Adj. Weight: 1111
 Scrotal: 36 ADG:

E	Production						Ultrasound				
	CED	BW	WW	YW	CEM	Milk	CW	%RP	REA	%IMF	Fat
D	8	.2	39	75	6	18	3		.08	.37	.012

E	Production						Ultrasound				
	CED	BW	WW	YW	CEM	Milk	CW	%RP	REA	%IMF	Fat
D	10	-1	41	68	8	12	2		.04	.15	.008

A good looking bull with ideal numbers.

DA 6807 208R 332W

75

AAA: Tatoo: 332W
 Birth Date: 5/25/09 Birth Weight: 70
 205 Adj. Weight: 804 365 Adj. Weight: 1217
 Scrotal: 37 ADG:

E	Production						Ultrasound				
	CED	BW	WW	YW	CEM	Milk	CW	%RP	REA	%IMF	Fat
D	10	-1	41	68	8	12	2		.04	.15	.008

E	Production						Ultrasound				
	CED	BW	WW	YW	CEM	Milk	CW	%RP	REA	%IMF	Fat
D	7	.6	38	69	7	19	1		.11	.16	.013

Check this guy out.

DA 6807 208R 334W

76

AAA: Tatoo: 334W
 Birth Date: 4/27/09 Birth Weight: 74
 205 Adj. Weight: 773 365 Adj. Weight: 1128
 Scrotal: 36 ADG:

E	Production						Ultrasound				
	CED	BW	WW	YW	CEM	Milk	CW	%RP	REA	%IMF	Fat
D	7	.6	38	69	7	19	1		.11	.16	.013

E	Production						Ultrasound				
	CED	BW	WW	YW	CEM	Milk	CW	%RP	REA	%IMF	Fat
D	0	0	28	65	6	21	5		.15	.27	.009

Check out his numbers.

DA REDIRECT 118T 72W

77

AAA: Tatoo: 72W
 Birth Date: 3/22/09 Birth Weight: 75
 205 Adj. Weight: 692 365 Adj. Weight: 982
 Scrotal: 36 ADG:

E	Production						Ultrasound				
	CED	BW	WW	YW	CEM	Milk	CW	%RP	REA	%IMF	Fat
D	0	0	28	65	6	21	5		.15	.27	.009

E	Production						Ultrasound				
	CED	BW	WW	YW	CEM	Milk	CW	%RP	REA	%IMF	Fat
D	0	0	28	65	6	21	5		.15	.27	.009

Out of a good first calf heifer.

SIMMENTAL HEIFERS



Lot 78 82W

DS MS DREAM ON 82W PB Polled

78	ASA: 2505433	Tattoo: 82W
	Birth Date: 3/2/09	Birth Weight: 74
	205 Adj. Weight: 554	365 Adj. Weight:

E	Growth				Maternal			Carcas		
	CE	BW	WW	YW	CE	Milk	WW	CW	REA	Marb.
D	10.1	-1.7	22.6	40.5	7.5	0.5	11.8	-15.9	-0.04	0.33

NICHOLS LEGACY G151
 CNS DREAM ON L186
 CNS SHEEZA DREAM K107W
 KD RED BROTHER 76G
 DS MS RED BROTHER 76G 28
 LEACHMAN R W BALDY Z208
 Black blaze

DS MS SF 179S 94W PB Polled

80	ASA: 2521187	Tattoo: 94W
	Birth Date: 3/24/09	Birth Weight: 62
	205 Adj. Weight: 612	365 Adj. Weight:

E	Growth				Maternal			Carcas		
	CE	BW	WW	YW	CE	Milk	WW	CW	REA	Marb.
D	11.9	-0.6	38.7	65	1.4	-0.8	18.6	-0.1	.36	.47

HOOKS SHEAR FORCE 38K
 DS Z FORCE 179S
 473L
 DS SIX SHOOTER 3H
 DS MS SIX SHOOTER 77L
 DS MS IRON MAN 160J
 Black blaze

DS MS DREAM ON 83W PB Polled

79	ASA: 2521194	Tattoo: 83W
	Birth Date: 3/22/09	Birth Weight:
	205 Adj. Weight: 510	365 Adj. Weight:

E	Growth				Maternal			Carcas		
	CE	BW	WW	YW	CE	Milk	WW	CW	REA	Marb.
D	12.5	-1.7	27.8	43.1	4.1	-8.8	5.1	-14.7	0.06	0.31

NICHOLS LEGACY G151
 CNS DREAM ON L186
 CNS SHEEZA DREAM K107W
 DS KDZINGER 221J 255M
 DS MS KDZ 255M 316P
 KD MISS IRONMAN 196G
 Solid black

DS MS DREAM ON 96W PB Polled

81	ASA: 2521188	Tattoo: 96W
	Birth Date: 3/18/09	Birth Weight: 88
	205 Adj. Weight: 565	365 Adj. Weight:

E	Growth				Maternal			Carcas		
	CE	BW	WW	YW	CE	Milk	WW	CW	REA	Marb.
D	11.7	1.3	32.9	56.8	6.5	-7.2	9.3	-1.9	.18	.31

NICHOLS LEGACY G151
 CNS DREAM ON L186
 CNS SHEEZA DREAM K107W
 DS ZINGER 313F 221J
 DS MS KDZ 221J 409L
 DS MS MONTANA 182D
 Solid black

DS MS LEG 128P 164W PB Polled

82	ASA: 25212521190	Tattoo: 164W
	Birth Date: 4/6/09	Birth Weight: 70
	205 Adj. Weight: 506	365 Adj. Weight:

E	Growth				Maternal			Carcas		
	CE	BW	WW	YW	CE	Milk	WW	CW	REA	Marb.
D	13.2	-3.5	21.2	38.1	2.4	0.7	11.3	-20.0	.11	.30

NICHOLS LEGACY G151
 DS LEGACY 128P
 KD MS RED LIGHT 120N
 DS SIX SHOOTER 3H
 DS MS SIX SHOOTER 27L
 DS MS BLACK IRISH 79J
 Solid black

DS MS LEG 128P 189W PB Polled

83	ASA: 2521202	Tattoo: 189W
	Birth Date: 4/8/09	Birth Weight: 78
	205 Adj. Weight: 589	365 Adj. Weight:

E	Growth				Maternal			Carcas		
	CE	BW	WW	YW	CE	Milk	WW	CW	REA	Marb.
D	11/7	-0.9	35.0	55.1	.8	-2.5	15.0	-6.5	0.17	.31

NICHOLS LEGACY G151
 DS LSEGACY 128P
 KD MS RED LIGHT 120H
 DS BLACK ZINGER 141B
 KD MS ZINGER 90J
 KD MISS LCH 600U 127G
 Solid black



Lot 83 189W

DS MS LORD OF RING 207W PB Polled

84

ASA: 2505603 Tatoo: 207W
 Birth Date: 4/1/09 Birth Weight: 84
 205 Adj. Weight: 641 365 Adj. Weight:

E P D	Growth				Maternal			Carcas		
	CE	BW	WW	YW	CE	Milk	WW	CW	REA	Marb.
D	8.7	1.2	33.1	58.9	3.5	-0.8	15.7	-0.7	0.08	.27

LORD BYRON
 DS LORD OF THE RING 243S
 DS 6 SHOOTER 284M
 NICHOLS LEGACY G151
 DS MS AMBUSH 82R
 DS MS SIX SHOOTER 232N
 Solid black

DS MS LORD OF RING 248W PB Polled

85

ASA: 2505604 Tatoo: 248W
 Birth Date: 4/18/09 Birth Weight: 82
 205 Adj. Weight: 634 365 Adj. Weight:

E P D	Growth				Maternal			Carcas		
	CE	BW	WW	YW	CE	Milk	WW	CW	REA	Marb.
D	8.1	0.5	30.7	56.4	.7	-3.2	12.2	-3.1	.18	.19

LORD BYRON
 DS LORD OF THE RING 243S
 DS 6 SHOOTER 284M
 DS ZINGER 313F 221J
 DS MS KDZINGER 221J 252N
 DS IRON MAN 228H
 Black white face.

DS MS LEG 128P 274W PB Polled

86

ASA: 2521201 Tatoo: 274W
 Birth Date: 4/20/09 Birth Weight: 83
 205 Adj. Weight: 575 365 Adj. Weight:

E P D	Growth				Maternal			Carcas		
	CE	BW	WW	YW	CE	Milk	WW	CW	REA	Marb.
D	11.6	-0.5	31.4	52.9	1.0	-5.1	10.6	-7.0	.15	.31

NICHOLS LEGACY G151
 DS LEGACY 128P
 KD MS RED LIGHT 120H
 DS 6 SHOOTER 151M
 DS MS 6 SHOOTER 151M 241P
 DS MS ZINGER 325K
 Solid black

DS MS 241R 12W PB Polled

87

ASA: 2521195 Tatoo: 12W
 Birth Date: 3/6/09 Birth Weight: 71
 205 Adj. Weight: 508 365 Adj. Weight:

E P D	Growth				Maternal			Carcas			
	CE	BW	WW	YW	CE	Milk	WW	CW	REA	Marb.	
D			-3.2	5.6	19.2		1.9	4.7	-30.2	-0.02	0.24

DS KDZINGER 221J 255M
 DS KDZ 255M 241R
 DS MS FULL FIGURES 103L
 DS P. STOCK 14N
 DS MS PS 14N 301T
 KD MS KDZINGER 313F 254N
 Solid black

DS MS LORD OF RING 204W PB Polled

88

ASA: 2505831 Tatoo: 204W
 Birth Date: 4/6/09 Birth Weight: 91
 205 Adj. Weight: 631 365 Adj. Weight:

E P D	Growth				Maternal			Carcas		
	CE	BW	WW	YW	CE	Milk	WW	CW	REA	Marb.
D	7.8	0.2	26.5	50.6	3.7	0.0	13.3	-6.9	.11	.12

LORD BYRON
 DS LORD OF THE RING 243S
 DS 6 SHOOTER 284M
 KD ZINGER 313F
 DS MS KDZ 313F 58R
 DS MS RED BROTHER 76G 28
 Black white face.

DS MS DREAM ON 23W 3/4 SM Polled

89

ASA: 2521189 Tatoo: 23W
 Birth Date: 3/11/09 Birth Weight: 70
 205 Adj. Weight: 582 365 Adj. Weight:

E P D	Growth				Maternal			Carcas		
	CE	BW	WW	YW	CE	Milk	WW	CW	REA	Marb.
D	11.7	-1.8	33.0	56.3	8.0	-4.1	12.4	-6.9	.10	.37

NICHOLS LEGACY G151
 CNS DREAM ON L186
 CNS SHEEZA DREAM K107W
 DS SIX SHOOTER 3H
 DS MS 6 SHOOTER 136P
 20H
 Solid black

DS MS INVASION 31W 3/4 SM Polled

90

ASA: 2521193 Tatoo: 31W
 Birth Date: 3/13/09 Birth Weight: 70
 205 Adj. Weight: 578 365 Adj. Weight:

E P D	Growth				Maternal			Carcas		
	CE	BW	WW	YW	CE	Milk	WW	CW	REA	Marb.
D	8.9	-1.2	29.3	46.9	-1.8	-6.1	8.5	-11.7	.10	.23

SRS J914 PREFERRED BEEF
 TRIPLE C INVASION R47K
 HOOKS KARRIE 47K
 DS KDZINGER 221J 255M
 DS MS KDZ 255M 192P
 DS MS AMBUSH 601H
 Solid black.

DS MS DREAM ON 98W 3/4 SM Polled

91

ASA: 2521191 Tatoo: 98W
 Birth Date: 3/21/09 Birth Weight: 78
 205 Adj. Weight: 444 365 Adj. Weight:

E P D	Growth				Maternal			Carcas			
	CE	BW	WW	YW	CE	Milk	WW	CW	REA	Marb.	
D	11.7	-1.2	16.8	33.3		8.0	-0.9	7.5	-19.2	.05	.34

NICHOLS LEGACY G151
 CNS DREAM ON L186
 CNS SHEEZA DREAM K107W
 DS SIX SHOOTER 3H
 DS MS SIX SHOOTER 298N
 DA MS BANDO 155 147D
 Solid black

DS MS LEG 128P 123W 3/4 SM Polled

92 ASA: 2521196 Tatoo: 123W
 Birth Date: 3/30/09 Birth Weight: 80
 205 Adj. Weight: 552 365 Adj. Weight:

E P D	Growth				Maternal			Carcas		
	CE	BW	WW	YW	CE	Milk	WW	CW	REA	Marb.
D	11.5	-2.8	24.4	46.1	1.1	-3.7	8.5	-14.1	-0.09	.42

NICHOLS LEGACY G151
 DS LSEGACY 128P
 KD MS RED LIGHT 120H
 DS SIX SHOOTER 3H
 DS MS SIX SHOOTER 22ON
 DA MS TRAVELER 18A
 Solid black

DS MS LORD OF RING 139W 3/4 SM Polled

93 ASA: 2505832 Tatoo: 139W
 Birth Date: 4/6/09 Birth Weight: 81
 205 Adj. Weight: 598 365 Adj. Weight:

E P D	Growth				Maternal			Carcas		
	CE	BW	WW	YW	CE	Milk	WW	CW	REA	Marb.
D	-1.6	23.4	53.9		4.1	15.8		-7.2	.10	.34

LORD BYRON
 DS LORD OF THE RING 243S
 DS 6 SHOOTER 284M
 GAR CIMARRON
 KD MS GAR CIMERON 16R
 DS MS LEGACY 50N
 Black white face



Lot 96 170W

DS MS LEG 128P 170W 3/4 SM Polled

96 ASA: 2521197 Tatoo: 170W
 Birth Date: 4/7/09 Birth Weight: 80
 205 Adj. Weight: 523 365 Adj. Weight:

E P D	Growth				Maternal			Carcas		
	CE	BW	WW	YW	CE	Milk	WW	CW	REA	Marb.
D	9.7	-2.8	17.2	33.3	0.1	7.1	15.7	-21.7	0.11	0.32

NICHOLS LEGACY G151
 DS LEGACY 128P
 KD MS RED LIGHT 120H
 KD RED BROTHER 76G
 DS MS RED BROTHER 76G 32
 439F
 Solid black



Lot 94 131W

DS MS FIRST DREAM 131W 3/4 SM Polled

94 ASA: 2521199 Tatoo: 131W
 Birth Date: 3/24/09 Birth Weight: 84
 205 Adj. Weight: 527 365 Adj. Weight:

E P D	Growth				Maternal			Carcas		
	CE	BW	WW	YW	CE	Milk	WW	CW	REA	Marb.
D	10.3	1.1	28.6	53.1	5.8	-2.9	11.4	-4.2	0	.31

CNS DREAM ON L186
 GCF FIRST DREAM P13
 BH FIRST GLANCE 88H
 DS SIX SHOOTER 3H
 DS MS SIX SHOOTER 232N
 174F
 Solid black

DS MS LEG 128P 152W 3/4 SM Polled

95 ASA: 2521200 Tatoo: 152W
 Birth Date: 3/27/09 Birth Weight: 80
 205 Adj. Weight: 604 365 Adj. Weight:

E P D	Growth				Maternal			Carcas		
	CE	BW	WW	YW	CE	Milk	WW	CW	REA	Marb.
D	10.0	-1.2	31.0	47.7	0.4	0.5	16.0	-11.4	0.08	.31

NICHOLS LEGACY G151
 DS LEGACY 128P
 KD MS RED LIGHT 120H
 DS BLACK ZINGER 141B
 DS MS ZINGER 133P
 11J
 Solid black

DS MS 241R 228W 3/4 SM Polled

97 ASA: 2521186 Tatoo: 228W
 Birth Date: 4/1/09 Birth Weight: 76
 205 Adj. Weight: 640 365 Adj. Weight:

E P D	Growth				Maternal			Carcas		
	CE	BW	WW	YW	CE	Milk	WW	CW	REA	Marb.
D	12.5	-1.8	23.1	40.3	-0.7	-7.1	4.5	-16.2	0.10	0.36

DS KDZINGER 221J 255M
 DS KDZ 255M 241R
 DS MS FULL FIGHRES 103L
 DS LEGACY 128P
 DS MS LEGACY 128P 107S
 DS MS 20A 1J 348P
 Solid black

DS MS LEG 128P 272W 3/4 SM Polled

98 ASA: 2521192 Tatoo: 272W
 Birth Date: 4/27/09 Birth Weight: 74
 205 Adj. Weight: 626 365 Adj. Weight:

E	Growth				Maternal			Carcas		
	CE	BW	WW	YW	CE	Milk	WW	CW	REA	Marb.
D	-3.3	28.7	44.8		-1.8	12.6		-16.1	-0.12	0.41

NICHOLS LEGACY G151
 DS LEGACY 128P
 KD MS RED LIGHT 120H
 EBV 6703
 DS MS EBV 22M
 DS MS RED BROTHER 76G 28
 Solid black

DS MS LORD OF RING 174W 5/8 SM Polled

100 ASA: 2505600 Tatoo: 174W
 Birth Date: 4/7/09 Birth Weight: 81
 205 Adj. Weight: 616 365 Adj. Weight:

E	Growth				Maternal			Carcas		
	CE	BW	WW	YW	CE	Milk	WW	CW	REA	Marb.
D	0.2	26.2	53.9		6.8	19.9		-4.8	0.07	.43

LORD BYRON
 DS LORD OF THE RING 243S
 DS 6 SHOOTER 284M
 GAR SOLUTION 84R
 DS MS GAR SOLUTION 84R
 KD MS RED BROTHER 181F
 Black blaze

DS LORD OF RING 205W 1/2 SM Polled

102 ASA: 2505435 Tatoo: 205W
 Birth Date: 4/11/09 Birth Weight: 80
 205 Adj. Weight: 571 365 Adj. Weight:

E	Growth				Maternal			Carcas		
	CE	BW	WW	YW	CE	Milk	WW	CW	REA	Marb.
D	0	21.2	39.7		-0.8	9.8		-13.7	-0.14	0.31

LORD BYRON
 DS LORD OF THE RING 243S
 DS 6 SHOOTER 284M
 DA NELSON TARGET 42M
 DA NT 42M 275R
 DA MS 616 18M
 Black blaze



Lot 100 174W

DS MS LEG 128P 298W 3/4 SM Polled

99 ASA: 2521198 Tatoo: 298W
 Birth Date: 4/27/09 Birth Weight: 298W
 205 Adj. Weight: 578 365 Adj. Weight:

E	Growth				Maternal			Carcas		
	CE	BW	WW	YW	CE	Milk	WW	CW	REA	Marb.
D	10.0	-0.4	31.5	51.3	0.4	0.1	15.9	-7.9	0.05	0.31

NICHOLS LEGACY G151
 DS LEGACY 128P
 KD MS RED LIGHT 120H
 DS BLACK ZINGER 141B
 DS MS ZINGER 132P
 11J
 Solid black

DS MS LORD OF RING 275W 5/8 SM Polled

101 ASA: 2505605 Tatoo: 275W
 Birth Date: 4/20/09 Birth Weight: 86
 205 Adj. Weight: 616 365 Adj. Weight:

E	Growth				Maternal			Carcas		
	CE	BW	WW	YW	CE	Milk	WW	CW	REA	Marb.
D	1.1	27.0	49.1		4.2	17.7		-6.6	0.12	0.09

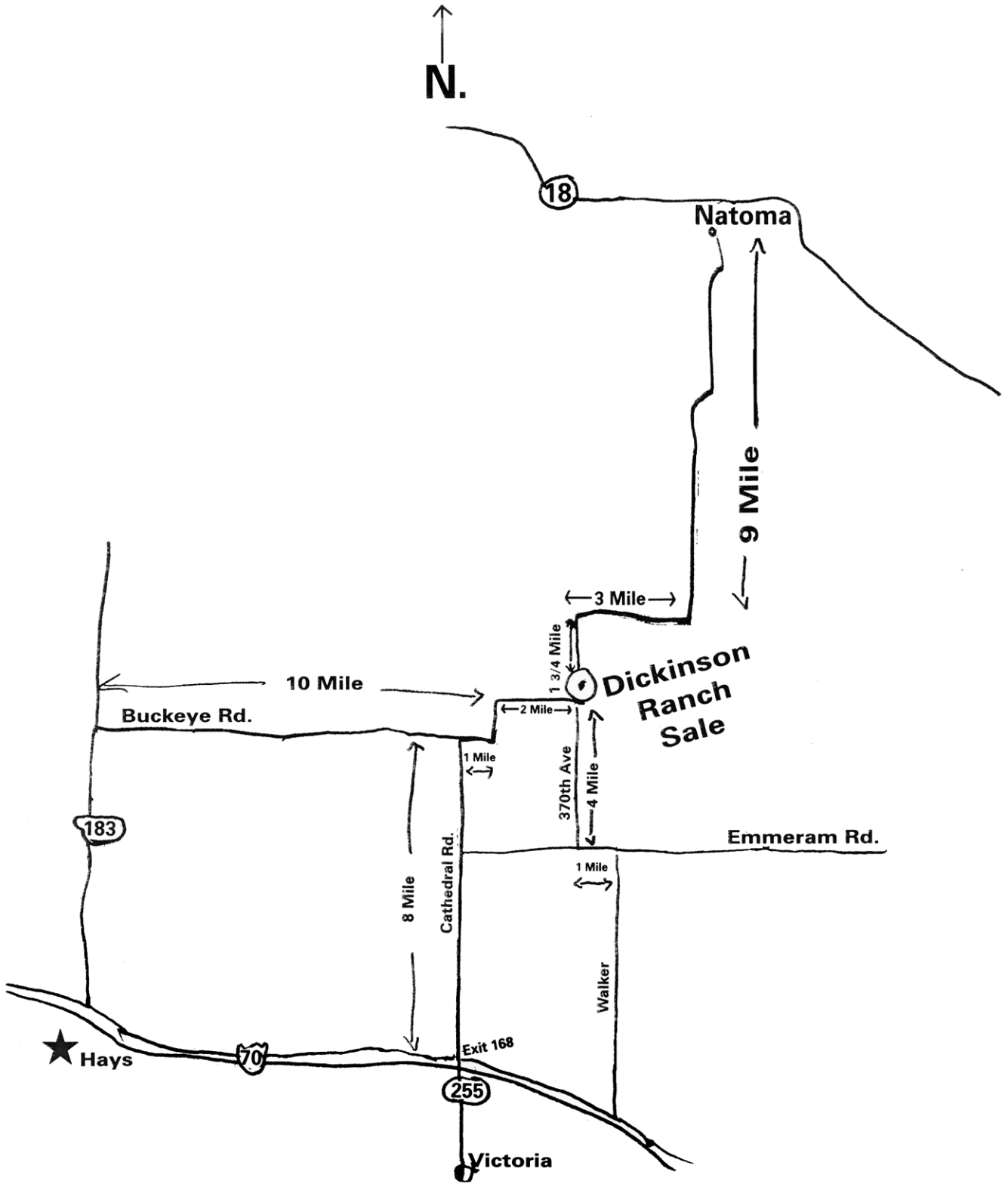
LORD BYRON
 DS LORD OF THE RING 243S
 DS 6 SHOOTER 284M
 DS P. STOCK 14N
 DS MS PS 14N 109R
 KD MS DIGGER 286
 Black blaze



Lot 102 205W



Lukas showing at the Fair.



**Dickinson Ranch
2324 370th Ave.
Gorham, KS 67640**